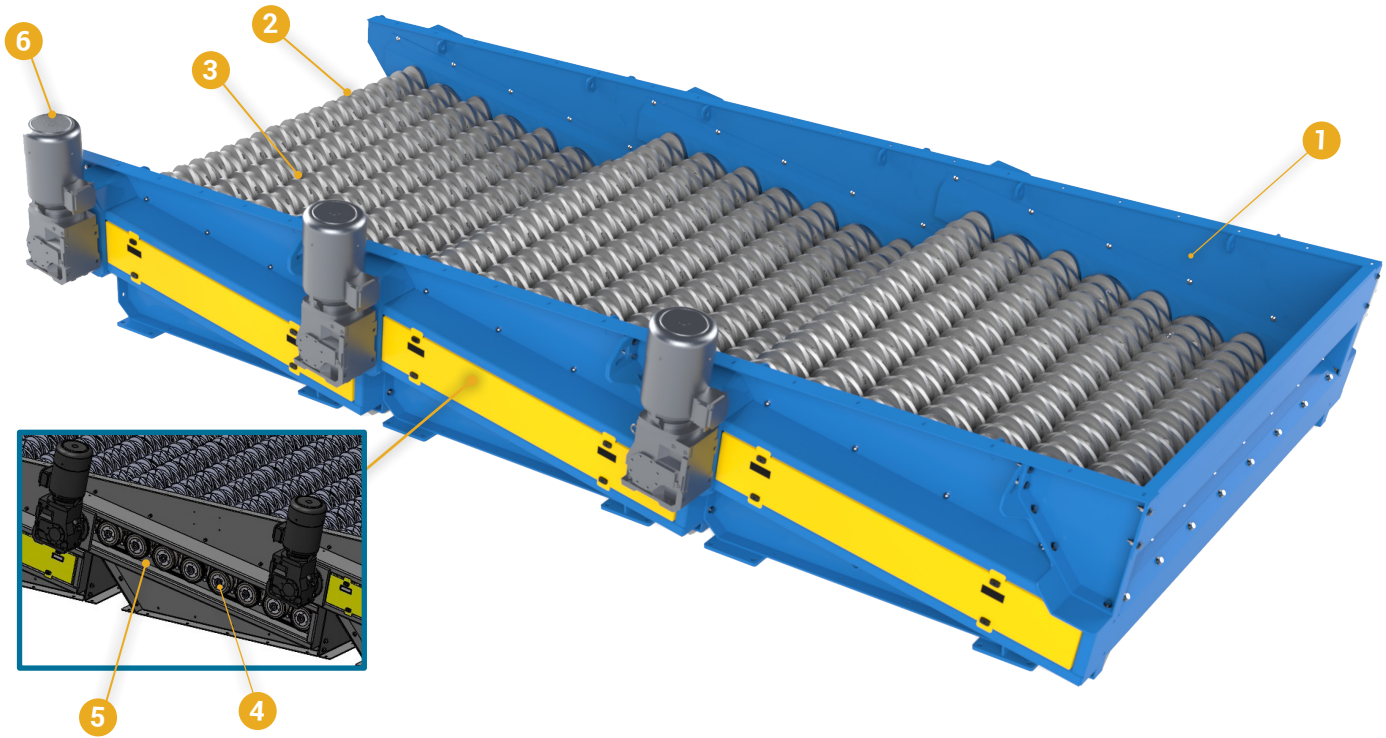


# CP GLASS BREAKER

## OVERVIEW

The CP Glass Breaker breaks and separates co-mingled glass containers and other glass items into small pieces of 2 inch and smaller. It also sorts and separates the smaller fraction materials from the remaining larger fiber and containers. The glass breaker screens are modular and can be connected to the required screen size.



## KEY FEATURES AND COMPONENTS

- 1 Frame**      Modular screen section
- 2 Discs**      Patented 5-lobed elliptical shaped, cast alloy steel discs
- 3 Rotors**      Steel square tube rotors are clocked 90 degrees to each other
- 4 Spindles**      Rotors are bolted to spindles allowing for easy removal/replacement of discs.
- 5 SyncDrive™**      Timing belts are utilized to drive the rotors for reduced maintenance.
- 6 Gearmotors**      With VFD the motor speed can be adjusted by the operator via the MCC.

# CP GLASS BREAKER

## KEY BENEFITS

- Breaks and separates glass materials into 2" and smaller pieces.
- Non-pinching disc design accurately sizes material; opening size between discs does not change.
- Minimizes contaminants and dramatically improves marketability of end-products.
- Decreases system-wide maintenance by removing glass early.
- Variable speed drive allows operator to adapt to material changes.
- SyncDrive™ utilizes belts, reducing maintenance as compared to industry standard roller chains.
- Lowest operating-cost screen with the longest lasting discs in the industry.

| Dimensions                         |   |   |
|------------------------------------|---|---|
| <b>Overall Dimensions (1 deck)</b> | (NW+32)W x 88L x 49H  | Inches  |
| <b>Nominal Frame Width (NW)</b>    | 60, 80, 100   | Inches  |
| <b>Screen Opening</b>              | 1.7 x 1.1   | Inches  |
| Main Components                    |   |   |
| <b>Rotors</b>                      | 9 rotors per deck   | 4" square tube, steel   |
| <b>Elliptical Cam-Discs</b>        | 6, 8, or 10 disc assemblies per rotor (respective to frame width) | 5 lobes, cast steel alloy, 4 bolts  |
| <b>Spindles</b>                    | Both ends of each rotor   | Automatically centered, bolt-on   |
| <b>Bearings</b>                    | Both sides of frame at each rotor                                 | 4-bolt flange mount, factory lubricated, concentric locking collar  |
| Drive Mechanisms                   |   |   |
| <b>Gear Motor</b>                  | 7.5HP gear motor per deck   | <b>U.S.:</b> 60 Hz, 3-Phase AC, 460V<br><b>E.U.:</b> 50 Hz, 3-Phase AC, 380-415V<br><b>CAN:</b> 60 Hz, 3-Phase AC, 575V |
| <b>Variable Frequency Drive</b>    | Rotor set of one deck rotates at speed of gear motor              | Gear motors accept digitized input voltage from the MCC voltage in frequencies from 30-90 Hz                            |
| <b>Syncdrive™</b>                  | Controls every 2 rotors   | Carbon fiber belt, taper-lock bushings  |
| Safety Mechanisms                  |   |   |
| <b>Access Doors</b>                | Access door(s) may be integrated into adjacent panels             | Equipped with interlock units controlled through the HMI.   |

R0321

Made in the  
**USA**

800-462-5311 • info@cpgrp.com

6795 Calle de Linea, San Diego, CA 92154 • cpgrp.com

