

# CP AUGER SCREEN™

---

## THE FUTURE OF MECHANICAL SCREENING

Fractionate your material stream to increase worker safety  
and improve downstream sorting efficiencies



## FRACTIONATE

Material preparation for downstream sorting is more important than ever as material streams become lighter and more contaminated. Mechanical, optical, robotic and human sorters all benefit from being fed a more homogenous and fractionated stream.

With the fractionate design principle in mind, the expert team at CP Group created the Auger Screen. This machine is truly the first of its kind that uses a series of cantilevered augers to split inbound material streams. The future of the MRF is here with this highly robust and versatile machine that is a true anti-wrap screen.



## DISRUPTIVE

The CP Auger Screen™ has disrupted our process flows, and we welcome it.

**Why?** It changed the way we engineer material recovery facilities and allowed us to eliminate the presort.

**How?** The robust machine can take a large amount of inbound volume and doesn't get wrapped or jammed by non-conforming material. This allows the inbound stream to be split allowing sorters to only see the large fraction on a reduced-burden belt which has the bulky residue or recyclables. Less sorters are needed due to the decreased volume. Sorters are safer since the small fraction (which typically contains sharps) is bypassed, and sorters are more efficient because they can see material more easily. Uptime is increased with less pause pedal and estop pushes on the manual sort lines. Success is set up for downstream sorting.



## LOW MAINTENANCE

The CP Auger Screen™ utilizes a series of steel cantilevered augers. Film plastics and stringy material that would wrap around traditional screen rotors spin off the end of the screws. 3D objects that typically jam traditional rotor screens sit between augers and come off the end of the screws. The steel augers last thousands of hours before needing replacement, if any. Minimal cleaning time needed.

## VERSATILE

The Auger Screens are multi-functional across various applications. They are low maintenance workhorses that keep your operation running and set up downstream sorting for success by creating homogeneous streams.

The versatility, durability and high-volume capabilities of the CP Auger Screen™ open the opportunity for various applications:

- Residential Single Stream
- Commercial and Industrial
- Municipal Solid Waste
- Construction and Demolition
- Mixed Material Streams
- Green Waste

## OVERS FRACTION

fewer people, safer people, more productive people



## UNDERS FRACTION

60% material bypasses traditional presort



# PRIMARY AUGER SCREEN

## ELIMINATE THE PRESORT

We all know the presort is the most dangerous sorter position in a MRF and is also usually the bottleneck. Sharps, biohazards and other materials hidden under a large burden depth of material moving quickly creates a dangerous and dizzying position. When these sorters need to slow down the line to remove a large item system, productivity goes down. The solution to this problem is to eliminate the presort.

- The CP Auger Screen™ is a first of its kind machine used as a primary separation screen in residential single stream MRFs.
- Diverts 60% or more of the inbound material away from the traditional presort. The undersized material bypasses the traditional presort, saving sorters from exposure to dangerous material. The large fraction post-sort requires fewer people to pull out the “big and ugly” material like rigid plastics, metals, wrapping hazards and large trash.
- Fewer people, safer people, more productive people.

### APPLICATIONS

Residential Single Stream

Commercial

Construction and Demolition





# OCC AUGER SCREEN

Patented tri-lobe steel augers create high agitation to break up conjoined and surfing material generating an OCC rich stream while fractionating out smaller materials. This machine can be used as a direct replacement of the traditional disc and rotor screen with the benefit of not wrapping.

The OCC Auger Screen is popular in commercial and residential stream rich in OCC. Because of the amazon-effect and rise of online consumerism in recent years, this machine has become an integral part of CPG's newest design flows. It can be used in tandem with the primary Auger Screen to start the process off in the most efficient way possible, or by itself deepening on the inbound material mix.

## FEATURES

- Durable steel cantilevered tri-lobe augers
- Non-wrapping, self-cleaning, and low maintenance
- High agitation and throughput
- Eliminates the presort enhancing worker safety

## APPLICATIONS

Residential Single Stream

Commercial



# CP SCALPING AUGER SCREEN

CPG began fractionating the material stream prior to the fiber screens a decade ago. The concept was great and worked well if the machine was cleaned frequently. This machine was high maintenance and if not cleaned well became a conveyor and decreased downstream sorting efficiencies.

CPG responded by creating the Scalping Auger Screen which boasts the same benefits as our old scalping screen but without the high maintenance. It is high capacity and delivers fractioned materials to improve downstream sorting without daily cleaning needed. It maintains high efficiencies throughout the shift without needing attention.

The rotors can be tightened to create a small fraction cut used to separate fines in green waste.

## APPLICATIONS

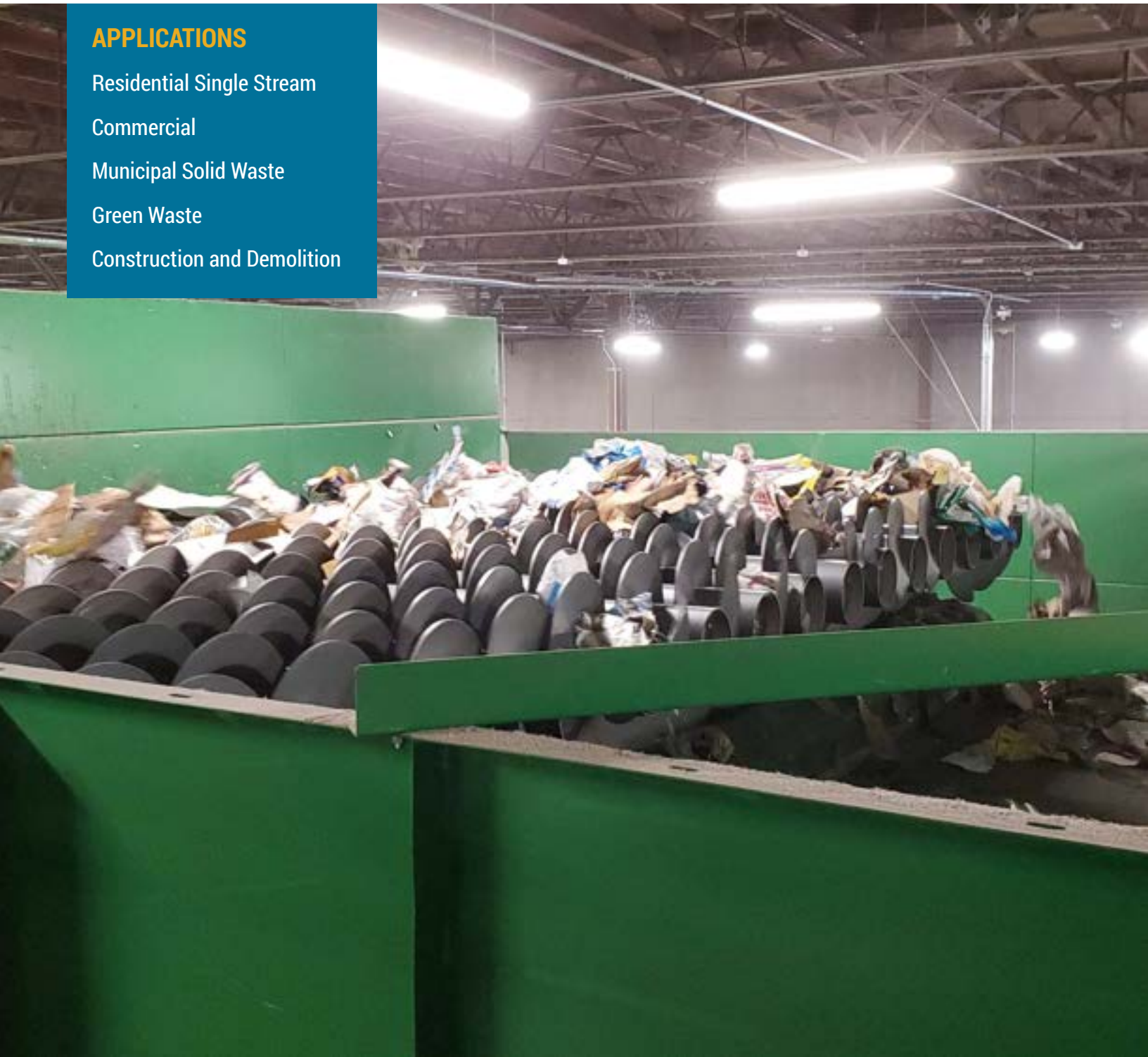
Residential Single Stream

Commercial

Municipal Solid Waste

Green Waste

Construction and Demolition





# CP FINES AUGER SCREEN

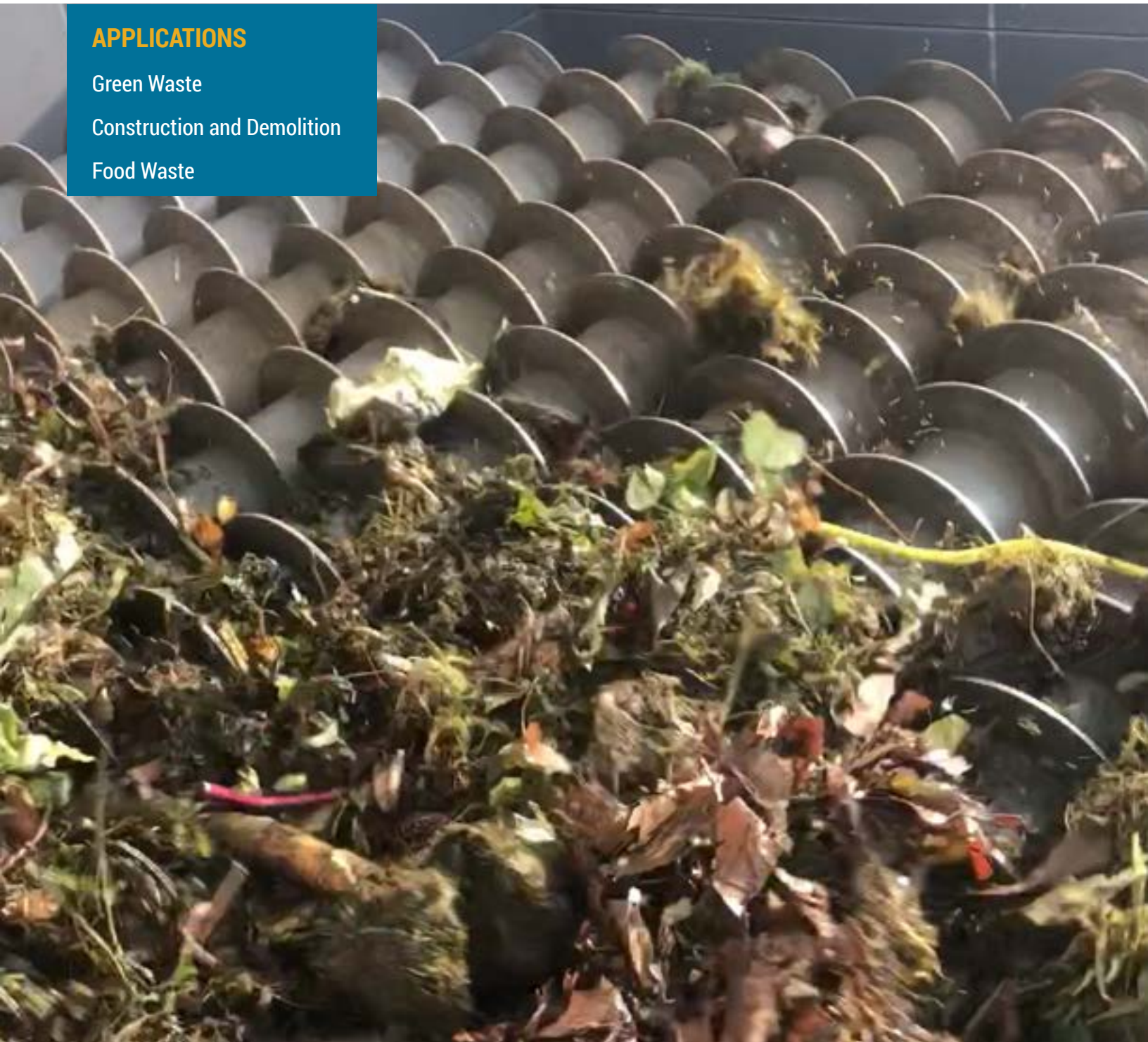
The CP Fines Auger Screen works well to fractionate out 3" minus particles from the stream. In an effort to save on damage to machines and downtime for maintenance and cleaning, the Fines Auger Screen removes dirt, grit and fines. This helps human sorters sift through the larger items with ease. In green waste applications, the goal is to make compost so this machine allows those small particles to bypass the grinder alleviating potential clogs. The Fines Auger Screen could also be used in food waste applications to get the larger fraction with prohibitive items out of the stream with an unders 3" minus to be a purer food waste. Additionally, operators can customize sizing to ensure the anaerobic digestion is accomplished. In C&D applications this screen can be utilized for an alternative daily cover to separate out the smaller particles.

## APPLICATIONS

Green Waste

Construction and Demolition

Food Waste





---

## ABOUT CP GROUP

CP Group is a team of manufacturers and leaders of innovation in the waste and recycling industry. Our team is comprised of the most reliable brands in the industry including CP Manufacturing, Krause Manufacturing, MSS, and Advanced MRF. We provide a variety of sort solutions worldwide, including MRF manufacturing, retrofits, audits, consulting, and engineering services. Custom turn-key systems are designed, installed, and serviced by CP Group for residential recycling, commercial and industrial, municipal solid waste, engineered fuel, construction and demolition, and electronic waste processing.

We don't just manufacture machines, we engineer solutions.

## CONTACT US

CP Group

619-477-3175 | 800-462-5311

6795 Calle de Linea, San Diego, CA 92154

[cpgrp.com](http://cpgrp.com)